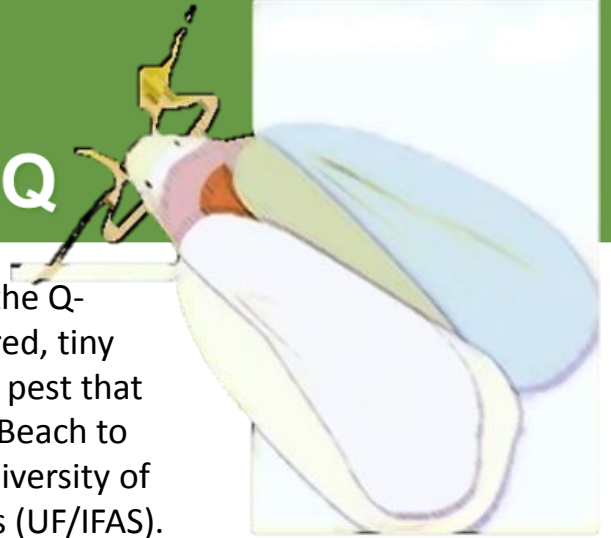


New PEST ALERT:

Whitefly Biotype Q



What: . Known scientifically as *Bemisia tabaci*, the Q-biotype or Mediterranean whitefly is a light-colored, tiny flying insect. The Q-biotype whitefly, a significant pest that could damage agriculture, has spread from Palm Beach to seven other Florida counties, according to the University of Florida Institute of Food and Agricultural Sciences (UF/IFAS).

Hosts: Crops that could eventually be affected include tomatoes, squash, beans, watermelons and many other vegetables and ornamentals.

Where: In April of 2016, this whitefly was found for the first time outside greenhouses and nurseries in Florida. Now it has been reported in homeowners' yards and on plants in retail nurseries destined to be planted in yards as far north as Duval County. It's also in Broward, Highlands, Hillsborough, Martin, Pinellas and Seminole counties.

Inspection and Sampling: Inspectors from the Florida Department of Agriculture and Consumer Services (FDACS) are in the process of tracing the flies back to the wholesale nurseries that shipped the plants to the retail stores. For identification purposes, infested leaves and dead insect specimens should be collected. Wrap in a dry paper towel and place in a seal-able plastic bag and then in an envelope. Freezing the specimen overnight before transport is highly recommended. Live insects should not be transported. For a complete list of resources from the UF/IFAS MREC website (Dr. Osborne) click [READ BEMISIA](#)

Information on your sample: Include Date, location, what type of vegetation is affected, number of suspected whiteflies, and any information about whether a pesticide has been used on the plant, is helpful information to managing the pest. For steps on how to submit a sample to FDACS DPI, [Click HERE](#) Researchers with UF/IFAS are working with the U.S. Department of Agriculture, Agricultural Research Service and FDACS to manage the whitefly.

UF/IFAS Extension Miami-Dade County is offering a FREE Pest Alert on July 29, from 9-12 pm. More info about this program, [Click HERE](#)