



<http://www.wec.ufl.edu/extension/>

Florida Backyard Landscapes for Wildlife

Dear Wildlife Landscaper,

The Florida Backyard Landscapes for Wildlife is a program that will help you to landscape your property to benefit wildlife. In addition to the enjoyment you will receive from increased wildlife viewing opportunities, you will be helping provide for the basic needs of many wildlife species from birds to butterflies and much more. As a participant, you will receive landscaping tips designed to attract and benefit wildlife.

To get started, please complete the questionnaire and the application attached. For a **\$5.00 fee**, which covers the cost of certification materials, this program includes information on how to design a wildlife refuge in your yard. Checks can be made out to the University of Florida.

There are many ways to landscape your yard to benefit wildlife. Some designs are simple, inexpensive, and require little maintenance (perhaps even reducing your yard work) while others are more complex. It is up to you to decide what is best for your particular situation. **To help you get started, we suggest that you visit the "Landscaping for Wildlife" section of our web site at <http://www.wec.ufl.edu/extension/>** and check out the enclosed info about getting a FREE copy of *Planting a Refuge for Wildlife* provided by the Florida Fish & Wildlife Conservation Commission (FWC) Nongame Wildlife Program and the Florida Wildlife Federation. Additional resources include Cooperative Extension publications such as "**Landscaping Backyards for Wildlife: Top Ten Tips for Success**" online at <http://edis.ifas.ufl.edu/UW175> and other Extension publications at http://edis.ifas.ufl.edu/TOPIC_Landscaping_for_Wildlife. You can also contact your county extension agent (for a list see <http://www.ifas.ufl.edu/www/extension/index.htm> or look in the county section of your telephone book government blue pages under Cooperative Extension Services).

Upon receipt of your application and the \$5.00 fee, we will send you comments on your landscape plan and may also suggest additional resource materials. Once your landscape design is approved, we will also present you with a certificate and yard sign that recognize your concern and efforts to provide food, water, and cover for wildlife.

Thank you for your interest in the Florida Backyard Landscapes for Wildlife Program. We are looking forward to assisting you with improving the wildlife habitat on your property.

Sincerely,

Laura A. Vasquez, FYN Coordinator
UF/IFAS Miami-Dade County Extension



Florida Wildlife Extension

Department of Wildlife Ecology and Conservation



Florida Backyard Landscapes for Wildlife

Application Form

Name _____

Street _____

City _____ Zip _____

County _____

Telephone _____

Email _____

**Please send both
the questionnaire and application (pages 1-10) to:**

**Laura A. Vasquez, FYN Coordinator
UF/IFAS Miami-Dade County Extension
18710 SW 288th St. Homestead, FL 33030-2309**

If you have any questions, please contact:

County Faculty:

Laura Vasquez, Program Coordinator
Florida Yards & Neighborhoods
305.248.3311 x239
lavasquez@ufl.edu

County Faculty:

Morgan Hopkins, M.S.
Florida Yards & Neighborhoods Agent
305.248.3311 x223
morganehopkins@ufl.edu

QUESTIONNAIRE

Please answer the following questions **BEFORE** you fill out the Florida Backyard Landscapes for Wildlife application. The information you provide in this questionnaire will help us improve and develop new educational programs for Florida residents and visitors. Your **answers** to these questions **will not influence your application** to this program. Please answer all questions as accurately as possible. All answers are confidential and anonymous. Please return questionnaire with application.

1. How many bird feeders, if any, do you have in your yard? _____
2. How many birdhouses, if any, have you provided for birds? _____
3. On average, how many minutes per week do you spend watching wildlife (birds, mammals, snakes, frogs) in your yard?
0-15 minutes___ / 16-30___ / 31-45___ / 46-60___ / If more than 60, how many?_____
4. On average, how many minutes per week do you spend watching butterflies, other insects, and spiders in your yard?
0-15 minutes___ / 16-30___ / 31-45___ / 46-60___ / If more than 60, how many?_____
5. On a scale of 1 to 7, how would you rate your ability to identify Florida bird species by sight? (1=can identify 0 to 2 species)
1 2 3 4 5 6 7
(7=can identify nearly all)
6. On a scale of 1 to 7, how would you rate your ability to identify Florida bird species by sound? (1=can identify 0 to 2 species)
1 2 3 4 5 6 7
(7=can identify nearly all)
7. Can you comfortably identify some adult Florida butterflies? Yes___ / No___
If yes, about how many species? _____
8. Can you comfortably identify some Florida reptiles (snakes, lizards, turtles) or amphibians (frogs, salamanders) by sight? Yes___ / No___
If yes, about how many species? _____
9. Can you comfortably identify some Florida frogs by their calls? Yes___ / No___
If yes, about how many species?_____
10. Can you comfortably identify some Florida mammals by sight? Yes___ / No___
If yes, about how many species?_____
11. Please approximate the percentage of your property covered by:
 - a. mowed lawn. _____%
 - b. unmowed areas with non-maintained "natural" vegetation. _____%
 - c. unmowed areas with maintained landscaped vegetation. _____%
12. Within the past five years, have you removed any exotic or invasive plants from your property? Yes___ / No___ / Don't Know___
13. Within the past five years, have you placed any native plants on your property?
Yes___ / No___ / Don't Know___
14. During the previous 12 months, about how much money did you spend on food and other materials (e.g. birdhouses, feeders, plants, etc.) to attract wildlife to your yard?
\$0-20___ / \$21-40___ / \$41-60___ / \$61-80___ / \$81-100___ /
If greater than \$100 then how much? \$_____
15. During the previous 12 months, about how many hours have you spent managing your property for wildlife (e.g. cleaning bird feeders, planting beds for butterflies, etc.)?
0-1 hour___ / 2-10___ / 10-20___ / 20-30___ / 40-50___ /
If greater than 50 hours, how many?_____

16. During the previous 12 months, have you discussed landscaping for wildlife with your neighbors? Yes___ / No___
If yes, with how many different neighbors?___

17. During the previous 12 months, have you told anybody in your area about the Florida Backyard Landscapes for Wildlife Program? Yes___ / No___
If yes, how many people? ___

18. During the previous 12 months, about how many times, if any, have you searched for wildlife information on the Department of Wildlife Ecology & Conservation Extension website (<http://www.wec.ufl.edu/extension/>)? 0___ / 1-2___ / 3-5___ / 6-8___ / 9-10___
If more than 10 times, about how many?___

19. During the previous 12 months, have you contacted the Florida Cooperative Extension Service regarding a wildlife question or issue? Yes___ No___
If yes, about how many times?_____

20. During the previous 12 months, about how many times, if any, have you searched for wildlife information on the Florida Fish and Wildlife Conservation Commission web site (<http://www.state.fl.us/fwc/>)? 0___ / 1-2___ / 3-5___ / 6-8___ / 9-10___
If more than 10 times, about how many?___

21. Besides the Florida Cooperative Extension Service, during the previous 12 months, have you contacted a government agency or private organization (e.g. Florida Fish and Wildlife Conservation Commission (FWC) or the Audubon Society) regarding a wildlife question or issue? Yes___ / No___

If yes, please list who and how many times (e.g. FWC- 2 times): _____

22. Do you know about the Florida Yards and Neighborhood Certification Program offered through the Extension Service? Yes___ / No___
If yes, have you been certified? Yes___ / No___

23. Do you know about the Master Gardeners Program offered through the Extension Service? Yes___ / No___
If yes, have you participated in the program? Yes___ / No___

24. How many years have you lived in Florida? 0 to 2___ / 2 to 5___ / 6 to 10___ / 11 to 15___ / 16 to 20___ / 21+___

25. On average, how many months per year do you live in Florida? 1 to 3___ / 4 to 6___ / 7 to 10___ / 11 to 12___

26. Your age? 18-25___ / 26-35___ / 36-45___ / 46-55___ / 56-65___ / 66+___

27. Gender of Applicant(s)?
Female___ / Male___ / Couple___

28. What is the highest level of formal education you have completed? Less than 12th grade___ / 12th grade or GED___ / Some college___ / Technical school or Community College Degree___ / College bachelors degree___ / Some graduate school___ / Master's degree___ / Ph.D.___ / Medical Doctor___ / Other (Please describe):_____

29. How would you describe the area where your home is located? Urban/Suburban___ / Rural___ / Don't know___

30. What is the current market value of your property? Less than \$75,000___ / \$75-150,000___ / \$151-250,000___ / \$251-350,000___ / \$351-450,000___ / \$450,000+___

APPLICATION

Description of Property

Please briefly explain what you have done and / or plan to do, to enhance your property for wildlife:

How many years have you lived at your current residence? _____

What type of pets do you own? _____

If you own a cat, where does it spend its time?

____Indoors ____Outdoors ____Both indoors and outdoors

Please list the wildlife species that you see on your property (attach a list if necessary):

Birds: _____

Mammals: _____

Reptiles (lizards, turtles, and snakes): _____

Amphibians (frogs, toads, and salamanders): _____

Butterflies, other insects, & spiders: _____

Please refer to the example on page 8, and complete the property map on page 9.

Don't worry if you can't draw, you don't need to be an artist to complete this. A basic sketch will do just fine, but please be sure to include the following details:

Instructions (see example on page 8):

1. At the top of the map, please circle the scale that you used.
2. Draw an outline of your house and other impervious surfaces such as driveway, walkway and patio.
3. Indicate what occurs just beyond your property lines (e.g. neighbors yard, pasture, woods). If the area beyond your property is undeveloped, indicate if it is likely to be developed soon.
4. List the current vegetation on your property in Table A on page 7 and place the corresponding number on the map (include lawns, bushes, trees, and islands of unmowed vegetation).
5. Indicate any flower or vegetable gardens.
6. Indicate standing dead trees with a 'D'.
7. Indicate brush piles with a 'B'.
8. Indicate any birdfeeders with a 'BF'.
9. Indicate any bird nest boxes with a 'NB'.
10. Indicate any water sources (e.g. ponds, bird baths, etc.)
11. Outline any "unmowed" areas that have natural vegetation.
12. List any planned future vegetation in Table B on page 7 and place the corresponding number on the map.

*****An alternative to drawing a map is to photocopy your property survey and then add the above details.*****

TABLE A
Plants, trees, and other vegetation
CURRENTLY on your property

- The numbers below should correspond to the location of the plant on your map.
- If you know which plants are native to Florida, please indicate below with an asterisk*.

1. _____	13. _____
2. _____	14. _____
3. _____	15. _____
4. _____	16. _____
5. _____	17. _____
6. _____	18. _____
7. _____	19. _____
8. _____	20. _____
9. _____	21. _____
10. _____	22. _____
11. _____	23. _____
12. _____	24. ** _____

****If you need to list more plants,
use numbers 25-49 and write on back of page, or on additional page.**



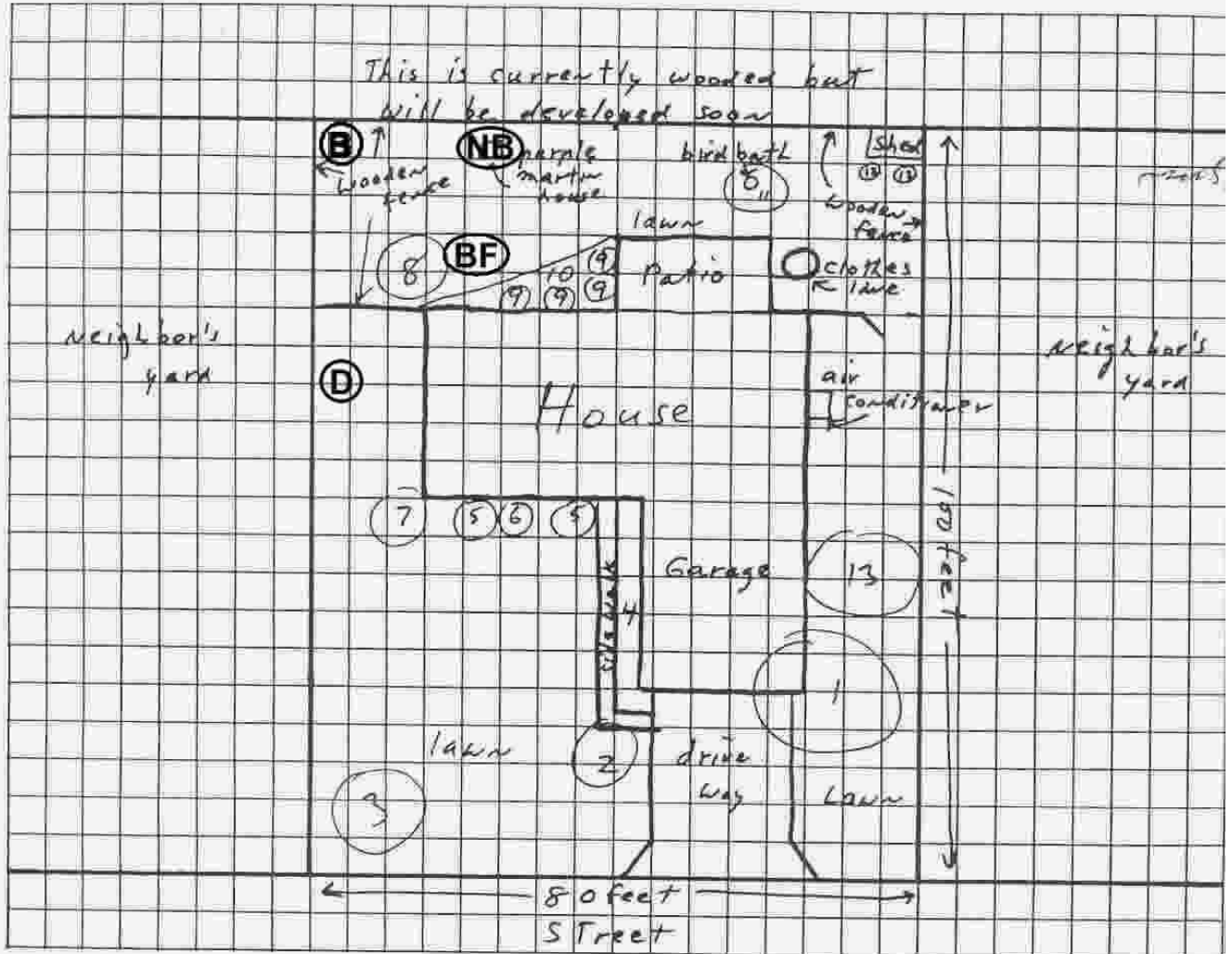
TABLE B
Vegetation you are considering for
FUTURE PLANTING

- These numbers should correspond to the location of the plant on your map.
- If you know which plants are native to Florida, please indicate below with an asterisk*.

50. _____	59. _____
51. _____	60. _____
52. _____	61. _____
53. _____	62. _____
54. _____	63. _____
55. _____	64. _____
56. _____	65. _____
57. _____	66. _____
58. _____	67. _____

EXAMPLE

Please circle which scale you use



Plant List

(If you know which plants are native to Florida, please indicate with an "*")

Common Name	Scientific Name	Common Name	Scientific Name
1. live oak	<i>Quercus</i> *	6. passion vine	*
2. mimosa	<i>Albizia</i> *	7. arborvitae	
3. red maple	<i>Acer rubrum</i> *	8. Florida holly	<i>Ilex</i> ? *
4. marigolds		9. coral bean	*
5. roses		10. petunias	

* If possible, to assist us in our evaluation of your property, please enclose photographs (or a disk with digital photos) of your yard as it is presently landscaped. We cannot return disks or photographs, so please be sure that you have duplicates for your own use.

** Please sign here if we can use your photos on our web site.
(We will only show the photo and will not include your address or any personal information.)

*** Please sign here if you would be willing to have your property included in a news release.

**** What is the name of a local newspaper that you prefer for a news release about your property?

***** Would you like to participate in a citizen-based bird-monitoring program? We have developed the **Florida Public Bird Monitoring Program**, a web site where you can enter your bird survey data and view results from participants across Florida. Through this web site, people can track which birds occur in their yards and communities over time.

Please visit the Florida Public Bird Monitoring Program web site at <http://bird.ifas.ufl.edu/> and read more about this exciting program. If you have any questions or comments, please contact Mark Hostetler at hostetlerm@wec.ufl.edu or 352-846-0568

***** Do you plan to participate in the Florida Public Bird Monitoring Program? Yes ____ / No ____

***** Fish and Wildlife Foundation of Florida has an excellent booklet, “**Planting a Refuge for Wildlife**” on how to landscape your property for wildlife – you can order a copy at <http://wildlifeflorida.com/PARFW>

***** University of Florida has an excellent handbook, “Landscaping for Florida’s Wildlife” that can be ordered at <http://ifasbooks.ifas.ufl.edu/>

**Please send both
the questionnaire and application (pages 1-10) to:**

**Laura A. Vasquez, FYN Coordinator
UF/IFAS Miami-Dade County Extension
18710 SW 288th St. Homestead, FL 33030-2309**

If you have any questions, please contact:

County Faculty:

Laura Vasquez, Program Coordinator
Florida Yards & Neighborhoods
305.248.3311 x239
lavasquez@ufl.edu

County Faculty:

Morgan Hopkins, M.S.
Florida Yards & Neighborhoods Agent
305.248.3311 x223
morganehopkins@ufl.edu



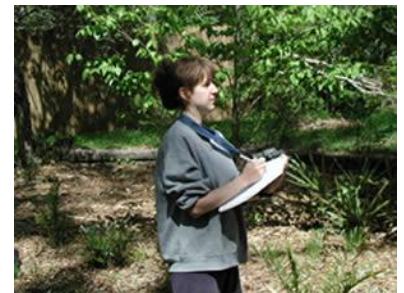
<http://www.wec.ufl.edu/extension/>

Florida Bird Monitoring Program



The Florida Bird Monitoring Program was developed by the Department of Wildlife Ecology and Conservation's Wildlife Extension office in June 2001. The objective of the Florida Bird Monitoring Program is to maintain a Web site where you can enter and view bird survey data collected by yourself and others. Homeowners as well as participants from natural resource, Cooperative Extension, and state education programs are encouraged to participate.

Which types of birds are visiting a yard or neighborhood? Through this Web site, you can track which birds occur in your yard and community over time. If you are a property owner that is landscaping to attract wildlife, you can learn which landscaping strategies and management techniques worked best for others in attracting certain bird species? The University of Florida's *Florida Backyard Landscapes for Wildlife Program* and *Florida Yards & Neighborhoods Program* can suggest ways for you to improve the ecological design and maintenance of your yard. By participating in this bird monitoring program, you can see how these techniques affected birds in your yard? You can also monitor the quantity and types of birds that visit any area throughout the state from month to month and year to year.



Most importantly, you can compare your survey results with others. Where and what types of birds are occurring in different areas? Are certain birds favoring one property over another? Why is this so? By comparing surveys, you can discuss ideas, pose questions, and develop suggestions about how to improve your neighborhood for birds.

Surveys can be conducted anywhere. Small lots and yards, neighborhoods, city parks and reserves, agricultural land and large properties, lakes and ponds, and schoolyards are all potential areas to survey birds.

Please visit our website at <http://www.wec.ufl.edu/extension/> for more information on this exciting new program.

If you have any questions, please contact:

Mark Hostetler, Extension Wildlife Specialist
Department of Wildlife Ecology and Conservation
University of Florida
P.O. Box 110430, Gainesville, FL 32611-0430
Tel: 352-846-0568
Email: hostetlerm@wec.ufl.edu